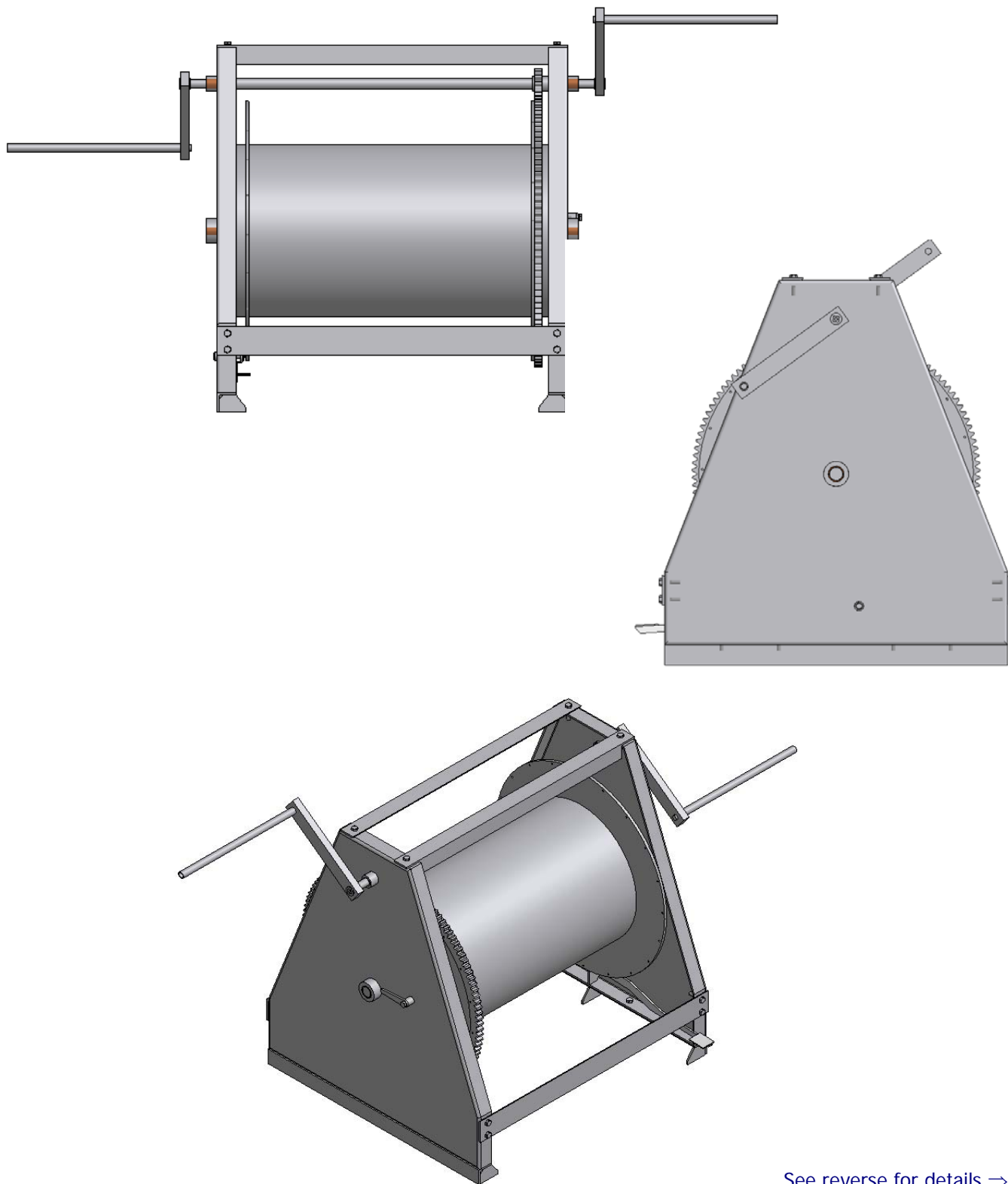
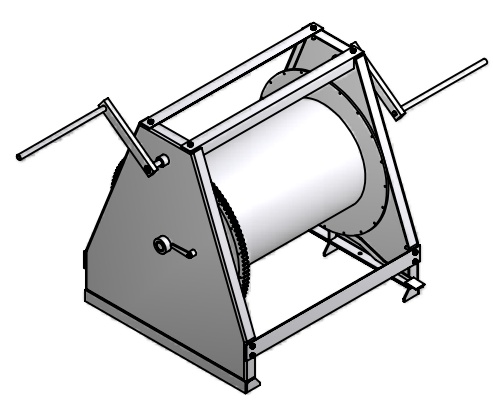
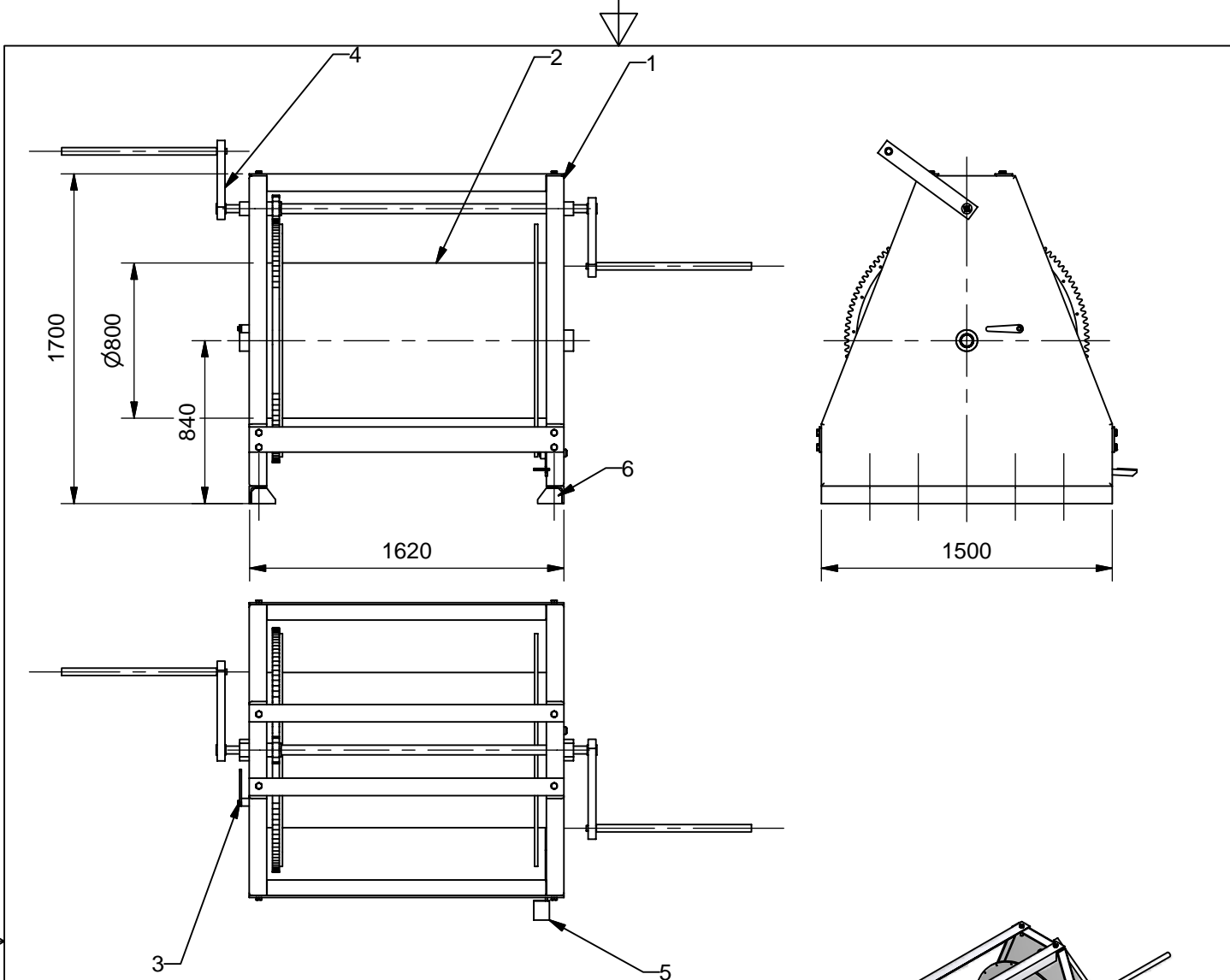


TM 504001L Steel Wire Rope Roller



See reverse for details ⇒



Drum Capacity: 280m of 52mm rope

SWL: 1470 kN

The foundation is in compliance with IMO Guidance, NSC/Circ. 1175 of May 2005.

Design load 1.25 x SWL
Allowable stresses 100/60 % of min yield point.

Material: S275 welded construction
Certificate: 3.1 acc. to EN 10204:2004
Surface treatment: Sa 2.5 + Hempel primer ZS 15890 grey

Order: TM 504001L

Upon installation the supporting structure should be test loaded to the specified SWL and test certificate issued. The test certificate should be available for inspection on board ship.

Suitable strengthening at deck/shell bulwark by the yard.

Pos	Description
1	Base Frame
2	Drum
3	Lock Device
4	Handle with shaft
5	Break
6	Foundation

STANDARD

Tech-Marine Equipment ApS Esrumvej 421- DK 3080 Tikøb Phone +45 4970 4395 Fax. +45 4970 1769	TM 504001L Steel Wire Rope Roller	Date	Checked by	Revision:
		19-03-2009		A
		Sheet	2 of 2	

Existing law protects TMs rights of possession to this drawing. The design or the drawing must not, without permission of TM be published, copied, reproduced, manufactured or exploited in any other way.