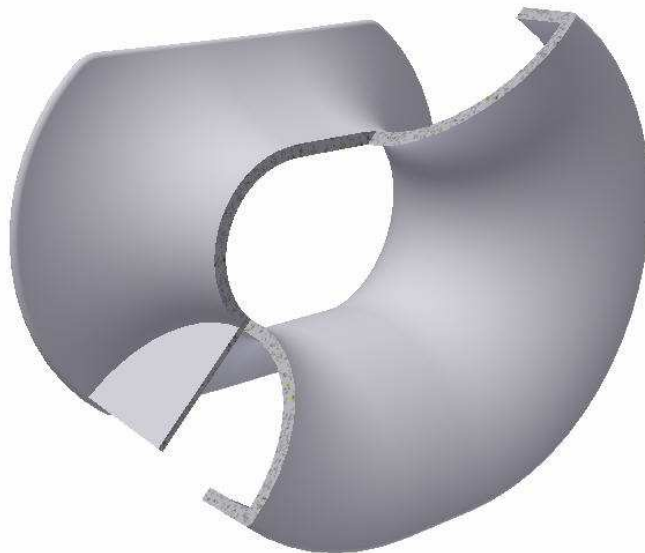
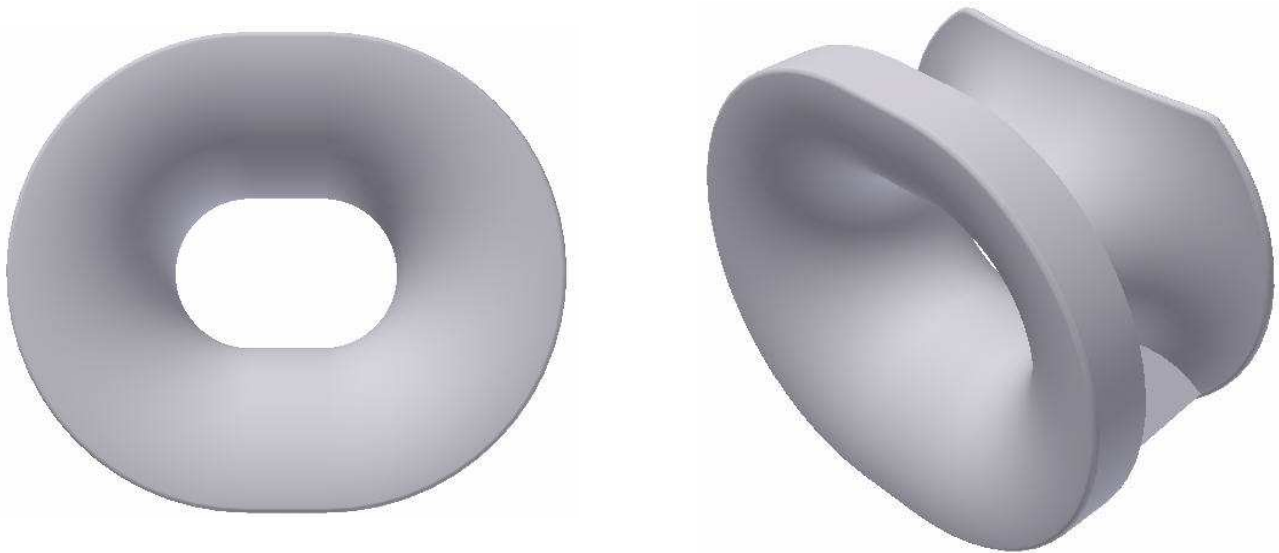
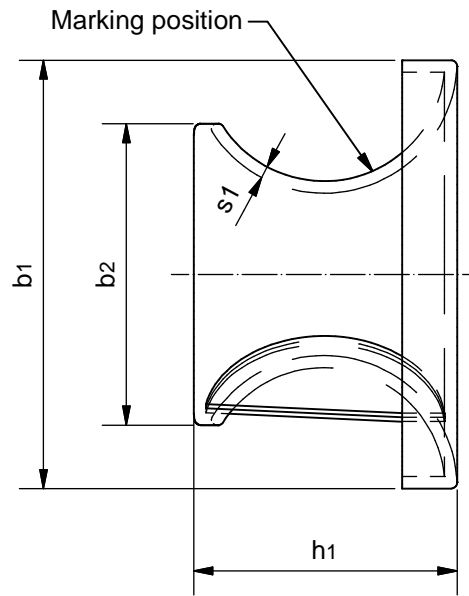
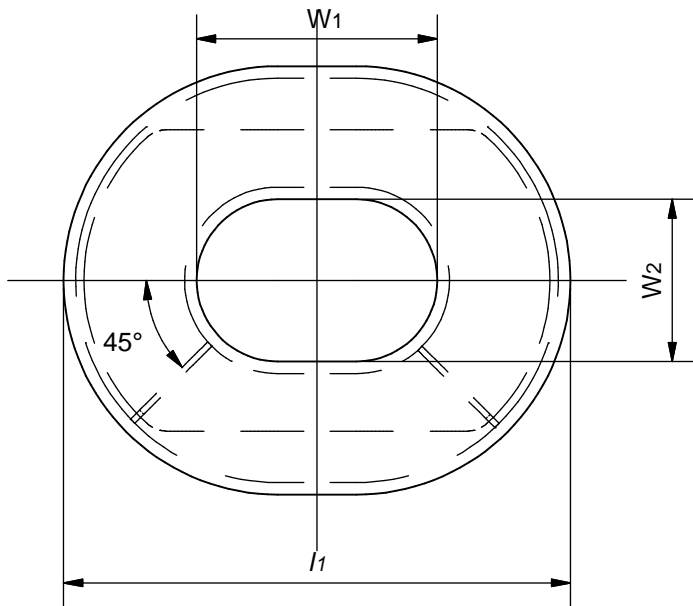


TM 506002L Multi Purpose Chock DIN 81915 shape A



SECTION VIEW

See reverse for details ⇒



MULTI PURPOSE CHOCKS DIN 81915 shape A										
DN	TM Type	Rope load MBL (kN)	Measurements - mm							Weight kg
			w ₁	w ₂	l ₁	b ₁	b ₂	h ₁	s ₁	
A1	125	98	125	90	285	250	175	160	10	18
A2	160	196	160	115	360	315	225	200	12	26
A3	200	294	200	140	450	390	275	250	14	42
A5	250	490	250	180	550	480	340	300	16	74
A8 *	320	785	320	225	680	585	415	360	18	120
A12 **	400	1177	400	270	840	710	500	440	20	185
A20	500	1962	500	320	1020	840	595	520	22	285
A32	600	3139	600	400	1300	1100	800	700	35	795

*) Comply with the Panama canal 2004 regulations for accompanying bitt for single chock load of 45,36 t (445 kN).
 **) Comply with the:
 Panama canal 2004 regulations for accompanying heavy bitt for double chock load of 64 t (628 kN).
 Panama canal 2014 regulations Panamax Plus and New Panamax for accompanying heavy bitt for double chock load of 90 t (883 kN).

Material:
 Cast steel (CS) - GS240 acc. to EN 10293 or equivalent
 or Grey Iron steel (GI) EN GJL-200 or equivalent
 or Stainless steel (SS) - G-X6CrNiMo 1810 acc. to EN 10283 or equivalent

Certification:
 3.1 acc. to EN 10204:2004

Surface Treatment:
 Cast steel & grey iron steel: Sa 2.5 + Hempel primer ZS 15890 grey.

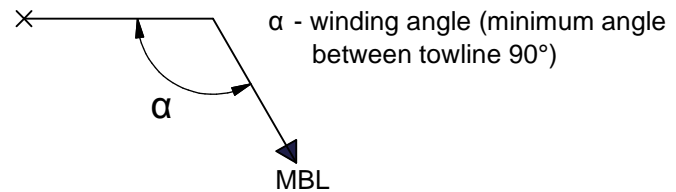
Constructed in compliance with IMO Guidance, MSC/Circ. 1175 of 24 May 2005 and IACS UR A2 (Rev.3).

Design load 1.25 x MBL
 Allowable stresses 100/60 % of min yield point
 SWL = MBL

Suitable strengthening below deck by the yard.

Supporting hull structure and reinforcement beneath to be arranged by the yard to the satisfaction by the classification society.

Order: TM 506002L-Type-Material
 Example: TM 506002L-A12-CS



STANDARD

Tech-Marine Equipment ApS Esrumvej 421 - DK 3080 Tikøb Phone +45 4970 4395 Fax. +45 4970 1769 Existing law protects TMs rights of possession to this drawing. The design or the drawing must not, without permission of TM be published, copied, reproduced, manufactured or exploited in any other way.	TM 506002L Multi Purpose Chock DIN 81915 shape A For bulwark and shell mounting	Date	Checked	Revision
		22-01-2016		F
		Sheet	2 of 2	