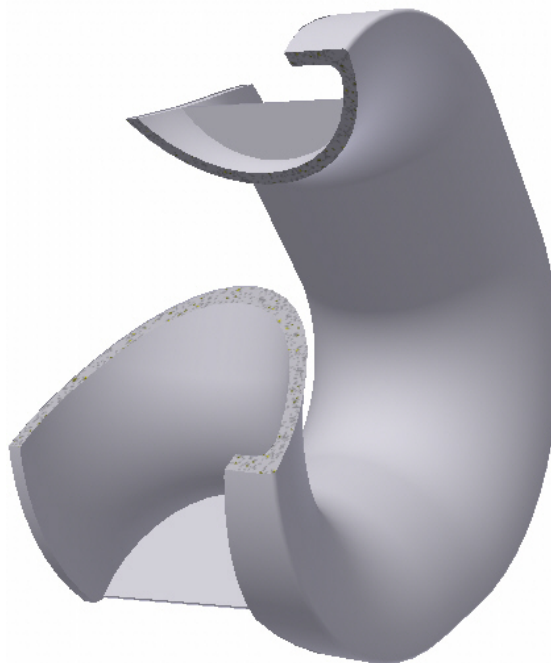
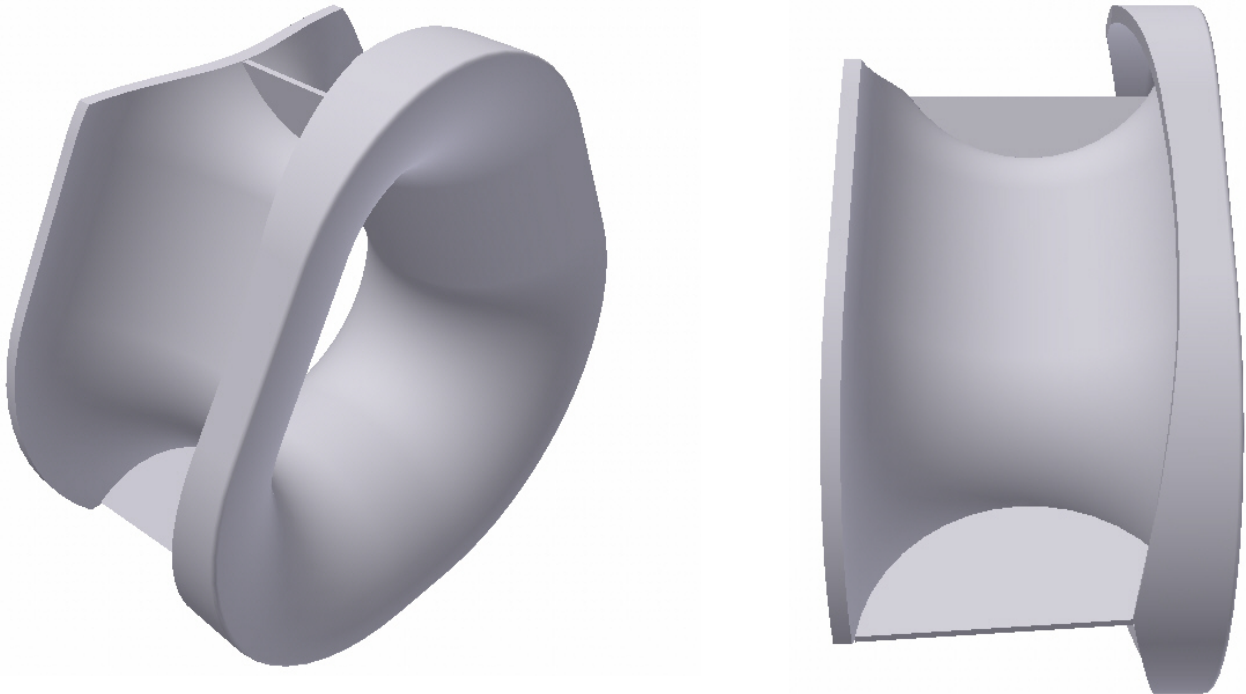
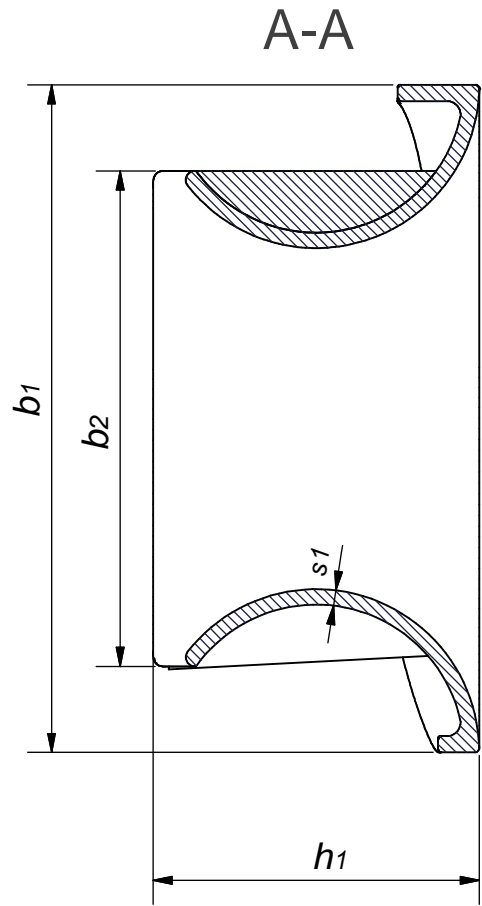
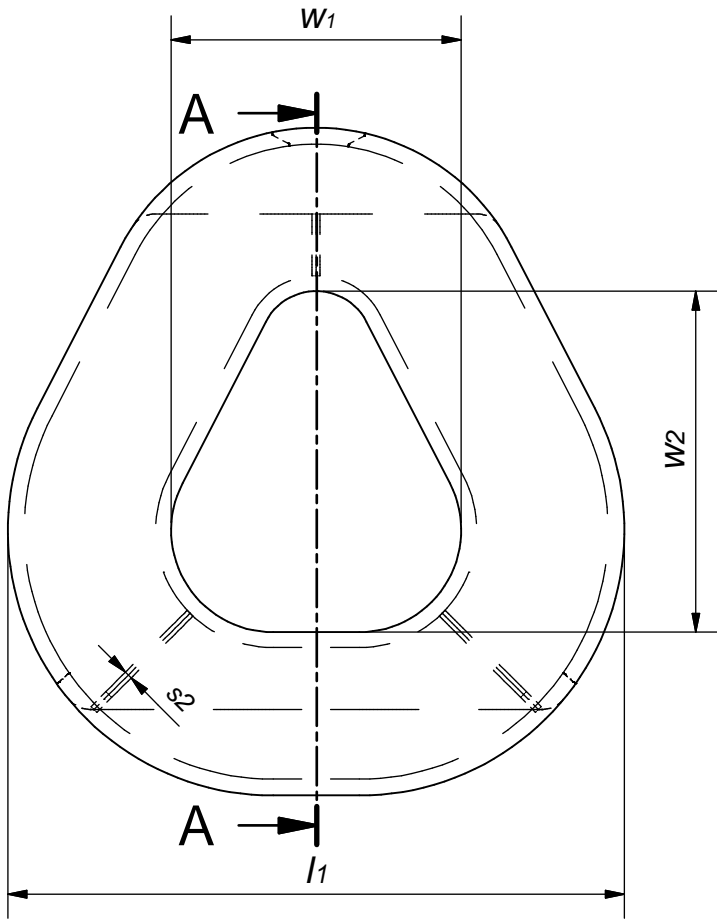


**TM 506005L Triangular Chock**



**SECTION VIEW**

See reverse for details ⇒



**Material:**

Cast steel (CS) - GS240 acc. to EN 10293 or equivalent  
 or Stainless steel (SS) - G-X6CrNiMo 1810 acc. to EN 10293 or equivalent

**Certification:**

3.1 acc. to EN 10204:2004

**Surface Treatment:** Sa 2.5 + Hempel primer ZS 15890 grey.

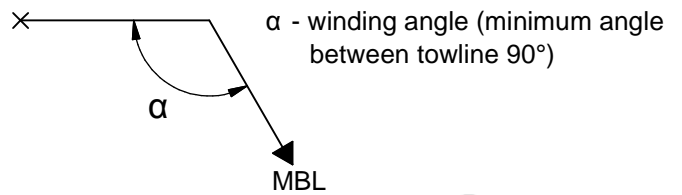
Constructed in compliance with IMO Guidance, MSC/Circ. 1175 of 24 May 2005 and IACS UR A2 (Rev.3).

Design load 1.5 x MBL  
 Allowable stresses 100/60 % of min yield point  
 SWL = MBL

Suitable strengthening below deck by the yard.

Supporting hull structure and reinforcement beneath to be arranged by the yard to the satisfaction by the classification society.

**Order:** TM 506005L-Type-Material  
 Example: TM 506005L-400-CS



Type	Rope Load MBL (kN)	Measurements - mm								Weight kg
		w <sub>1</sub>	w <sub>2</sub>	l <sub>1</sub>	b <sub>1</sub>	b <sub>2</sub>	h <sub>1</sub>	s <sub>1</sub>	s <sub>2</sub>	
320	785	320	376	680	736	518	360	18	9	140
400	1177	400	470	840	910	640	440	20	10	215

**STANDARD**

<b>Tech-Marine Equipment ApS</b> Esrumvej 421 - DK 3080 Tikøb Phone. +45 4970 4395 Fax. +45 4970 1769 <small>Existing law protects TMs rights of possession to this drawing. The design or the drawing must not, without permission of TM be published, copied, reproduced, manufactured or exploited in any other way.</small>	<b>TM 506005L</b>  <b>Triangular Chock</b>  <b>For bulwark mounting</b>	Date	Checked	Revision
		26-02-2016		E
		Sheet	2 of 2	