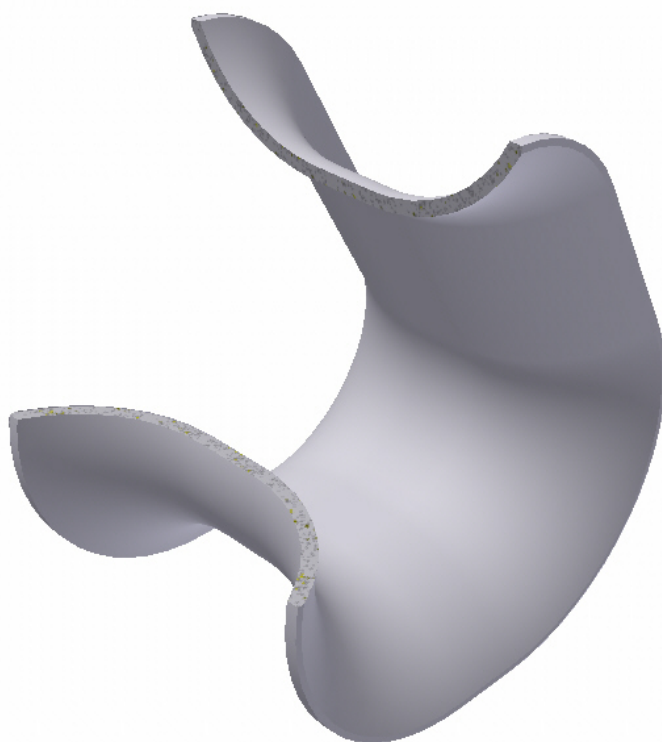


**TM 506006L Triangular Chock 400 x 500**



**SECTION VIEW**

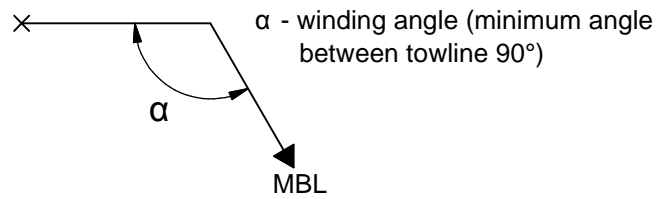
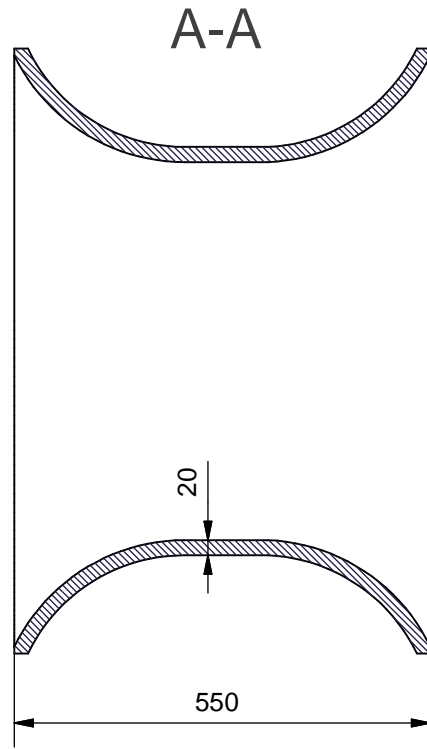
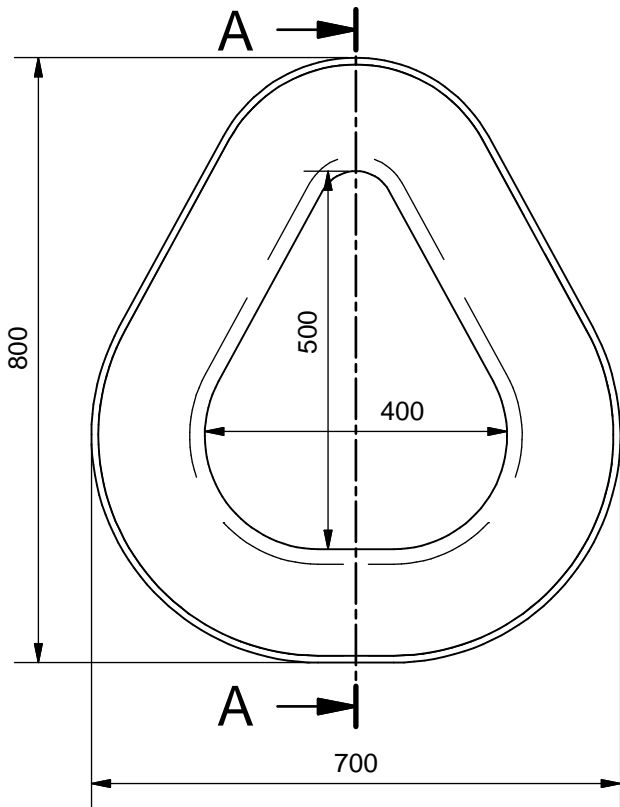
See reverse for details ⇒

**TECH-MARINE EQUIPMENT APS**

**ESRUMVEJ 421 • 3080 TIKØB • DENMARK**

E-mail: Tech-Marine@Tech-Marine.dk • www.tech-marine.dk

Phone +45 4970 4395 • Fax +45 4970 1769 • CVR 25 99 96 49



**Note:**

Check for installation in bulwark and A-frame

**Material:**

Cast steel (CS) - GS 240 acc. to EN 10293 or equivalent  
or Stainless steel (SS) - G-X6CrNiMo 1810 acc. to EN 10283  
or equivalent

**Certification:**

3.1 acc. to EN 10204:2004

**Surface treatment:**

SA 2.5 Hempel primer ZS 15890 grey

Constructed in compliance with IMO Guidance,  
MSC/Circ. 1175 of 24 May 2005 and IACS UR A2 (Rev.3).

Rope load MBL = 2500 kN

Design load 1.5 x MBL

Allowable stresses 100/60 % of min yield point

SWL = MBL

Suitable strengthening below deck by the yard.

Supporting hull structure and reinforcement beneath to be  
arranged by the yard to the satisfaction by the classification  
society.

**Order:** TM 506006L-material

Example: TM 506006L-CS

STANDARD

<b>Tech-Marine Equipment ApS</b> Esrumvej 421 - DK 3080 Tikøb Phone. +45 4970 4395 Fax. +45 4970 1769 <small>Existing law protects TMs rights of possession to this drawing. The design or the drawing must not, without permission of TM be published, copied, reproduced, manufactured or exploited in any other way.</small>	<b>TM 506006L</b>  <b>Triangular Chock 400x500</b>  <b>Bulwark installation</b>	Date	Checked	Revision
		26-02-2016		C
		Sheet	2 of 2	