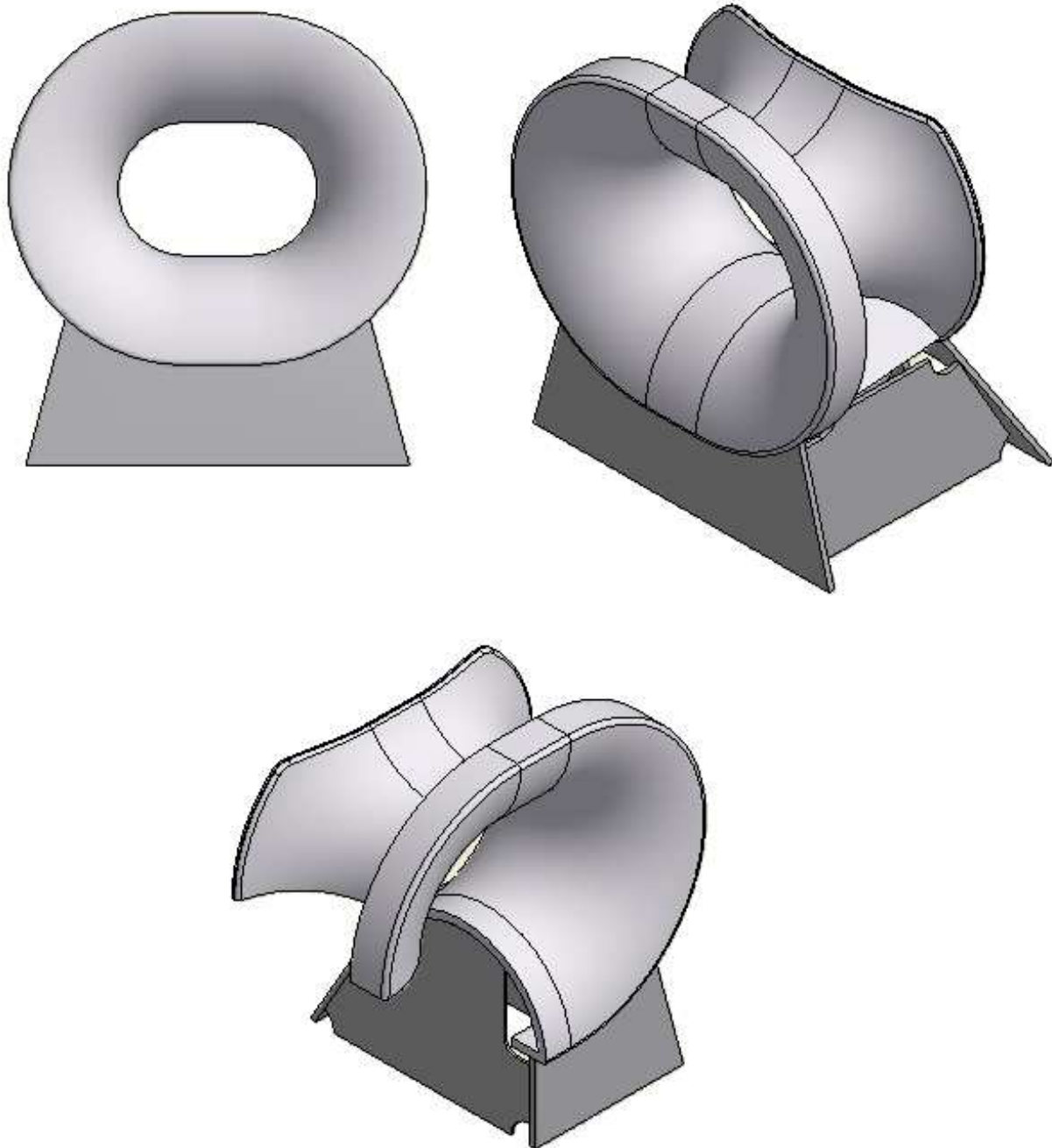


## TM 506010L DIN Chock Type A with Seat



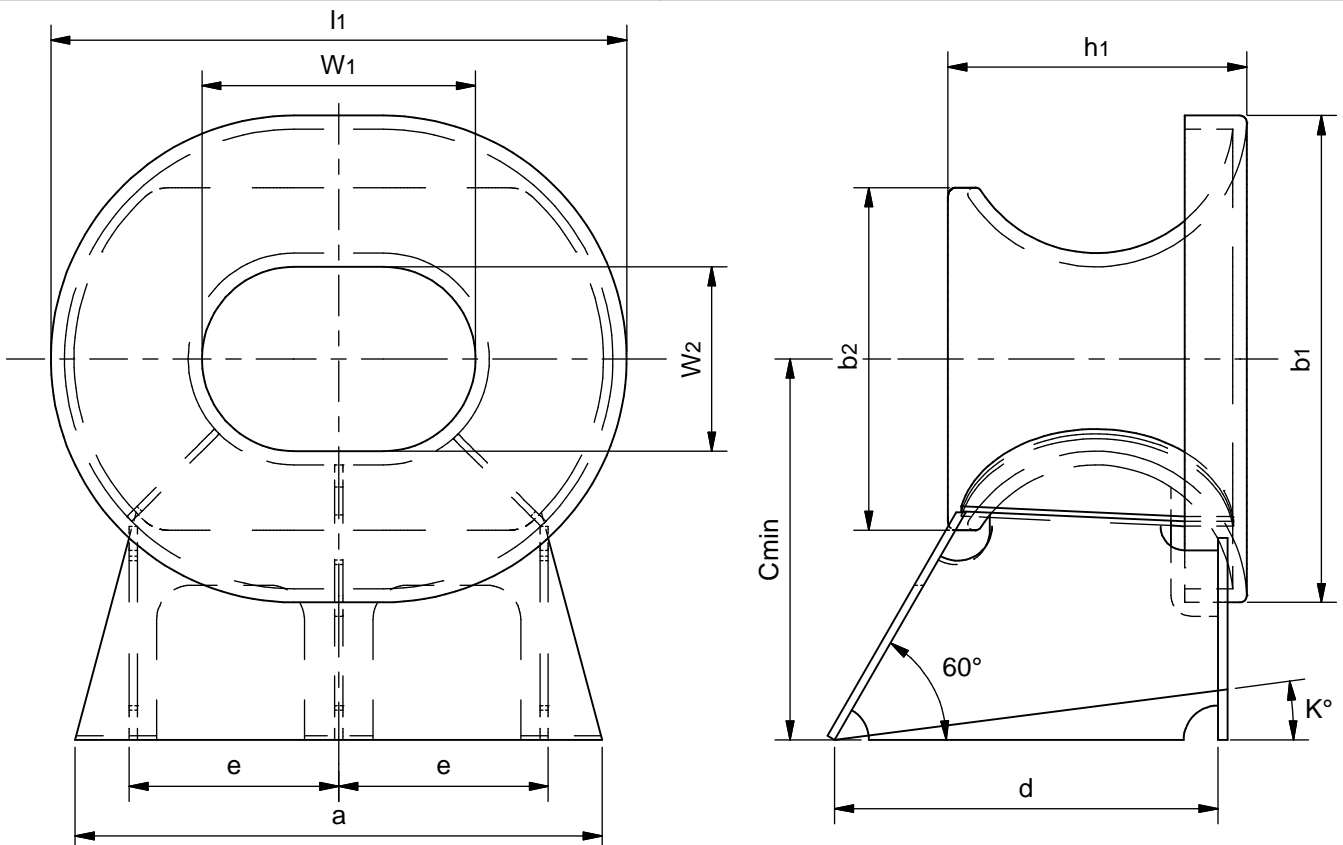
**SECTION VIEW**

See reverse for details ⇒

**TECH-MARINE EQUIPMENT APS**

**ESRUMVEJ 421 • 3080 TIKØB • DENMARK**

E-mail: Tech-Marine@Tech-Marine.dk • www.tech-marine.dk  
Phone +45 4970 4395 • Fax + 45 4970 1769 • CVR 25 99 96 49



MULTI PURPOSE CHOCKS DIN 81915 SHAPE A (TM 506002L)									Seat			
DN	TM Type	Rope load MBL (kN)	Measurements - mm						Measurements - mm			
			w <sub>1</sub>	w <sub>2</sub>	l <sub>1</sub>	b <sub>1</sub>	b <sub>2</sub>	h <sub>1</sub>	a	Cmin	d	e
A8*	320	785	320	225	680	585	415	360	670	442.5	240	246
A12**	400	1177	400	270	840	710	500	440	768	554	310	305
A20	500	1962	500	320	1020	840	595	520	1042	670	380	375

\*) Comply with the Panama canal 2004 regulations for accompanying bitt for single chock load of 45,36 t (445 kN).

\*\*\*) Comply with the:

Panama canal 2004 regulations for accompanying heavy bitt for double chock load of 64 t (628 kN).

Panama canal 2014 regulations Panamax Plus and New Panamax for accompanying heavy bitt for double chock load of 90 t (883 kN).

Dimensions C and K to be specified by the customer.

**Material:**

Seat - S355 - EN 10025 or equivalent

**Certification:**

3.1 acc. to EN 10204:2004

**Surface Treatment:** Sa 2.5 + Hempel primer ZS 15890 grey.

Constructed in compliance with IMO Guidance, MSC/Circ. 1175 of 24 May 2005 and IACS UR A2 (Rev.3).

Design load 1.25 x MBL

Allowable stresses 100/60 % of min yield point

SWL = MBL

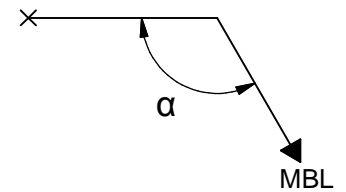
Suitable strengthening below deck by the yard.

Supporting hull structure and reinforcement beneath to be arranged by the yard to the satisfaction by the classification society.

**Order:** TM 506010L-Type-Chock Material

Example: TM 506010L-A12-CS

$\alpha$  - winding angle (minimum angle between topline 90°)



**STANDARD**

<b>Tech-Marine Equipment ApS</b> Esrumvej 421 - DK 3080 Tikøb Phone +45 4970 4395 Fax. +45 4970 1769	<b>TM 506010L</b>  <b>DIN Chocks type A with Seat</b>	Date	Checked by	Revision:
		22-01-2016		C
		Sheet	2 of 2	

Existing law protects TMs rights of possession to this drawing. The design or the drawing must not, without permission of TM be published, copied, reproduced, manufactured or exploited in any other way.