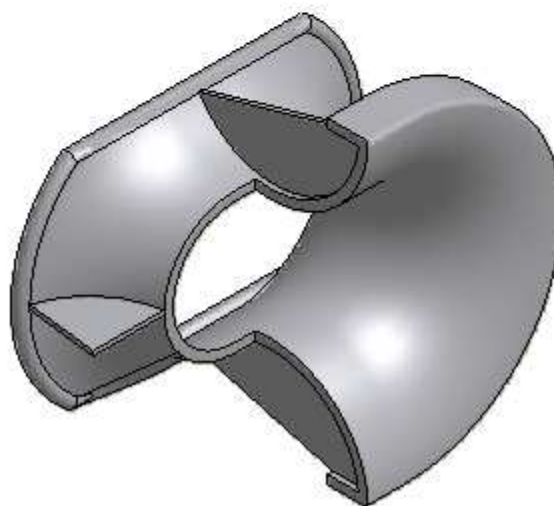
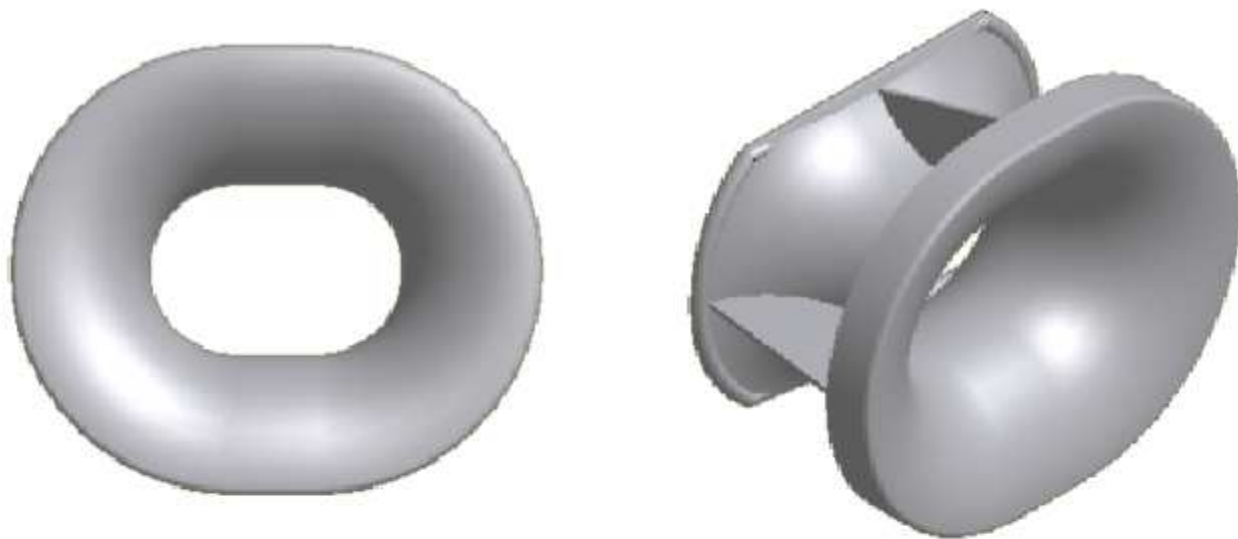
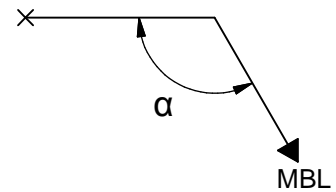
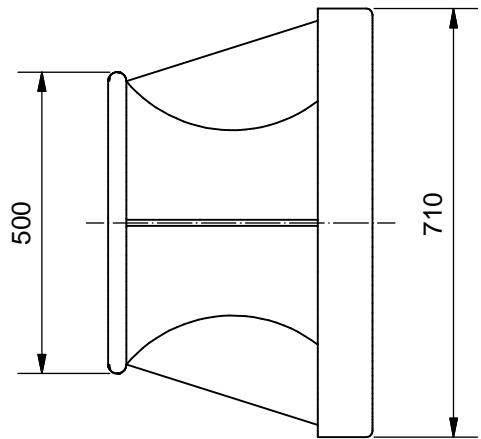
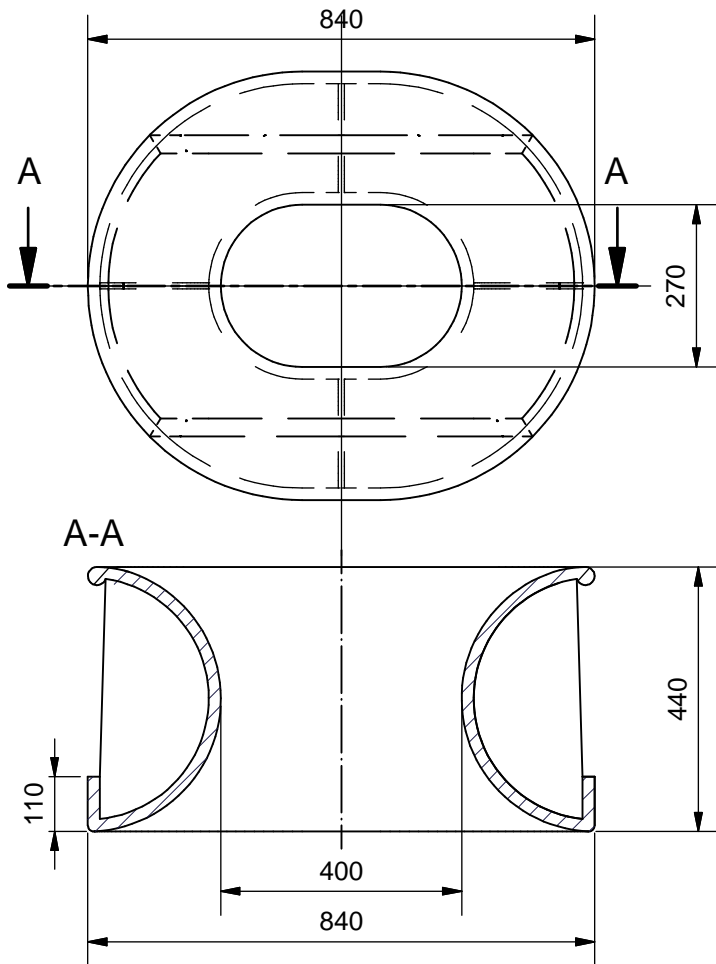


TM 506013L Bulwark Chock 400 x 270

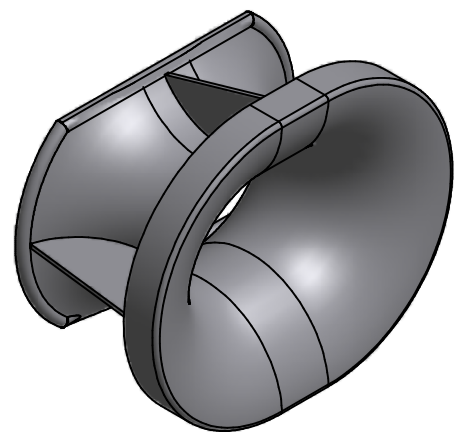


SECTION VIEW

See reverse for details ⇒



α - winding angle (minimum angle between towline 90°)



Material:

Cast steel (CS) - GS240 acc. to EN 10293 or equivalent
or Stainless steel (SS) - G-X6CrNiMo 1810 acc. to EN 10283 or equivalent

Certification:

3.1 acc. to EN 10204:2004

Surface Treatment: Sa 2.5 + Hempel primer ZS 15890 grey.

Constructed in compliance with IMO Guidance, MSC/Circ. 1175 of 24 May 2005 and IACS UR A2 (Rev.3).

Rope load MBL = 1177 kN
Design load 1.25 x MBL
Allowable stresses 100/60 % of min yield point
SWL = MBL

Comply with the Panama canal 2004 regulations for accompanying heavy bitt for double chock load of 64 t (628 kN).
Comply with the Panama canal 2014 regulations Panamax Plus and New Panamax for accompanying heavy bitt for double chock load of 90 t (883 kN).

Suitable strengthening below deck by the yard.

Supporting hull structure and reinforcement beneath to be arranged by the yard to the satisfaction by the classification society.

Order: TM 506013L-400x270-Material
Example: TM 506013L-400x270-CS

STANDARD

Tech-Marine Equipment ApS

Esrumvej 421 - DK 3080 Tikøb
Phone +45 4970 4395 Fax. +45 4970 1769

Existing law protects TMs rights of possession to this drawing. The design or the drawing must not, without permission of TM be published, copied, reproduced, manufactured or exploited in any other way.

TM 506013L

Bulwark Chock 400 x 270

For bulwark and shell mounting

Date	Checked	Revision
22-01-2016		B
Sheet	1 of 1	