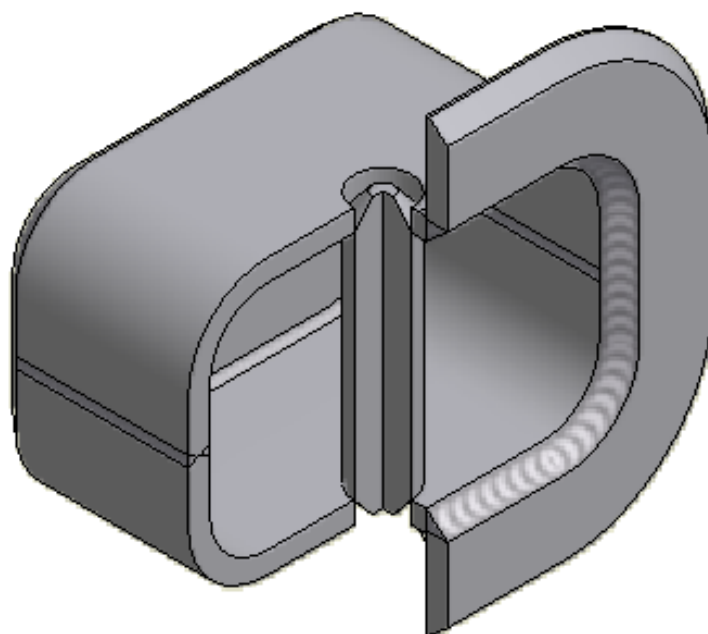
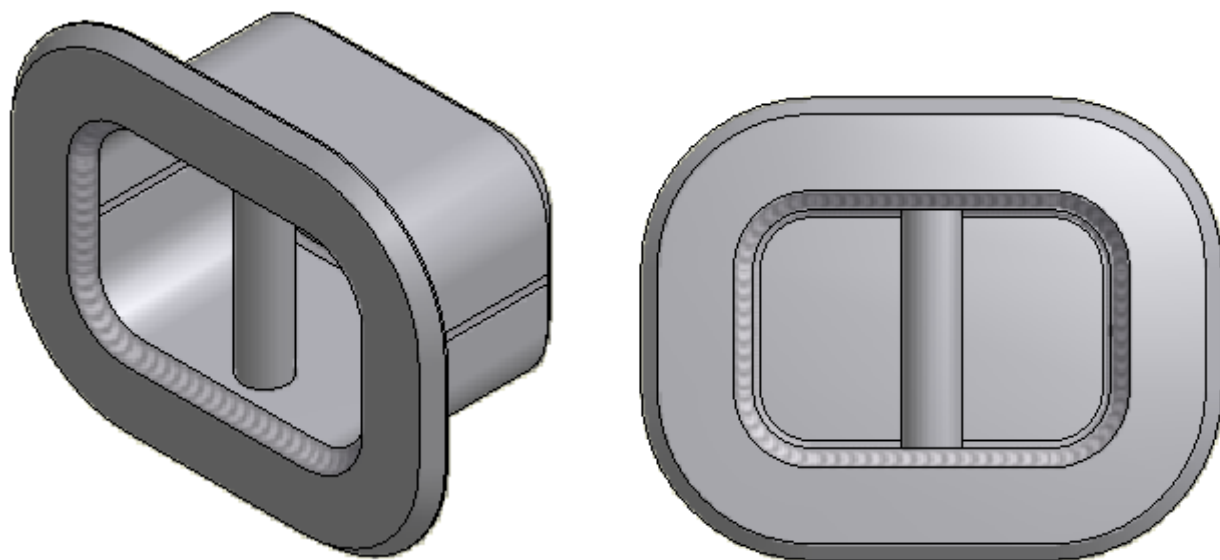


TM 507008L Recessed Deck/Shell Bitts



SECTION VIEW

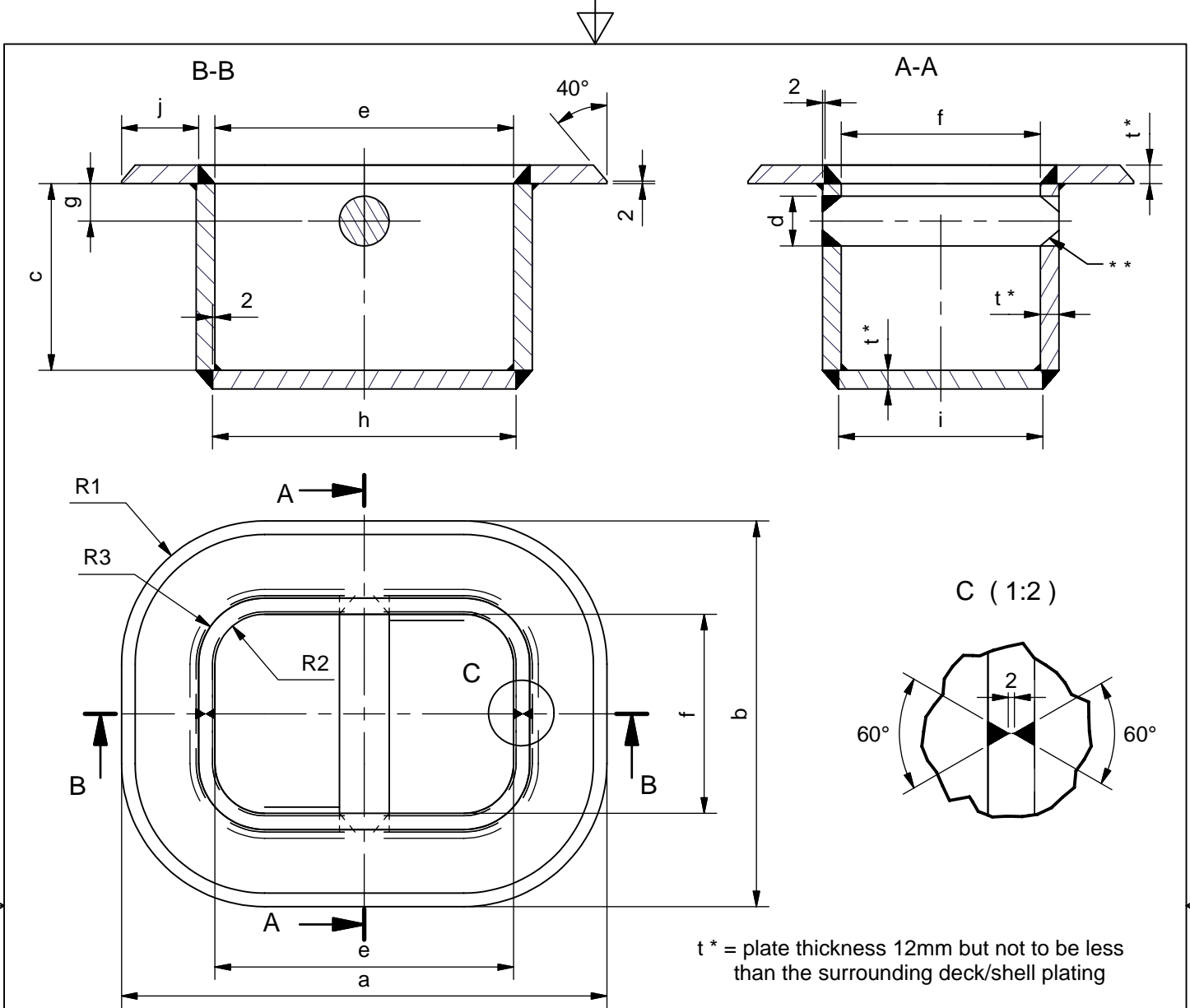
See reverse for details ⇒

TECH-MARINE EQUIPMENT APS

ESRUMVEJ 421 • 3080 TIKØB • DENMARK

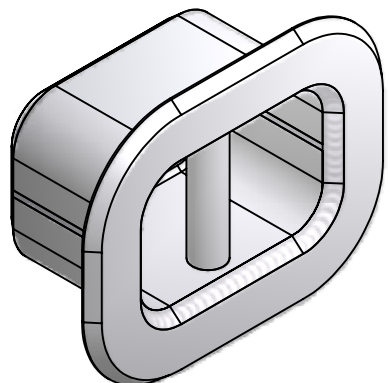
E-mail: Tech-Marine@Tech-Marine.dk • www.tech-marine.dk

Phone +45 4970 4395 • Fax +45 4970 1769 • CVR 25 99 96 49



t* = plate thickness 12mm but not to be less than the surrounding deck/shell plating

** - to be weld by yard after installation as last element in order to reduce risk for cracks



SWL = XXX kN
 Design load 1.25 x SWL
 Allowable stresses 100/60 % of yield point

Material: S355 J2 - EN 10025 or equivalent
 Material certificate: 3.2 acc. EN 10204:2004, issued by class body.
 Surface treatment Sa 2.5 + Hempel primer ZS 15890 grey

Upon installation the supporting structure should be test loaded to the specified SWL and test certificate issued.
 The test certificate should be available for inspection on board ship.
 Suitable strengthening at deck/shell bulwark by the yard.

Order no.: TM507008-type, Example: TM507008-A

| TM TYPE | SWL (kN) | Measurements - mm | | | | | | | | | | | | | |
|---------|----------|-------------------|-----|-----|----|-----|-----|----|-----|-----|----|----|-----|----|----|
| | | a | b | c | d | e | f | g | h | i | j | t* | R1 | R2 | R3 |
| A | 38 | 230 | 160 | 60 | 28 | 150 | 80 | 25 | 154 | 84 | 26 | | 65 | 25 | 39 |
| B | 47 | 390 | 310 | 150 | 38 | 240 | 160 | 30 | 244 | 164 | 61 | | 115 | 40 | 54 |

STANDARD

| | | | | |
|--|---|------------|------------|-----------|
| Tech-Marine Equipment ApS Esrumvej 421 - DK 3080 Tikøb Phone +45 4970 4395 Fax. +45 4970 1769 | TM 507008L Recessed Deck/Shell Bitts | Date | Checked by | Revision: |
| | | 23-03-2009 | | B |
| | | Sheet | 2 of 2 | |

Existing law protects TMs rights of possession to this drawing. The design or the drawing must not, without permission of TM be published, copied, reproduced, manufactured or exploited in any other way.