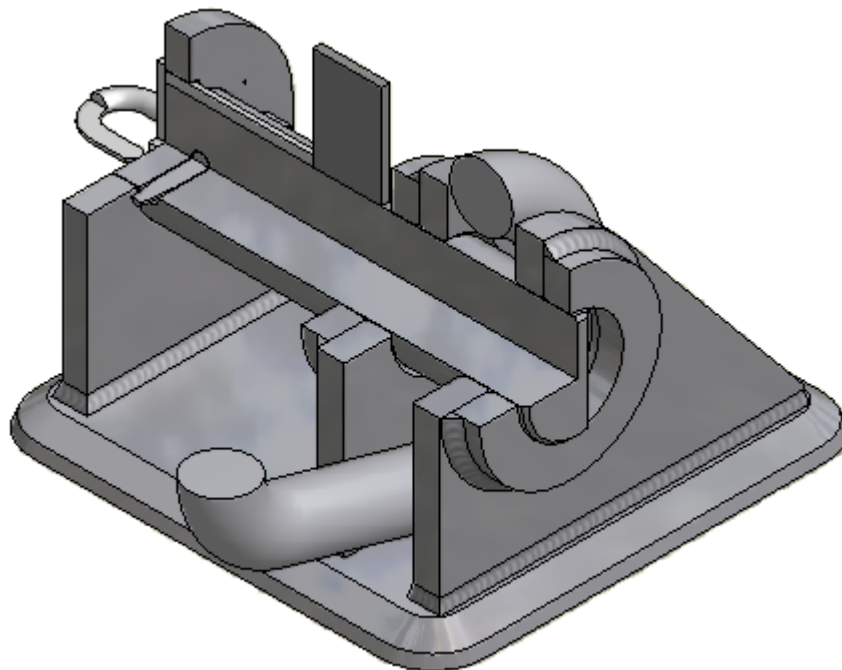
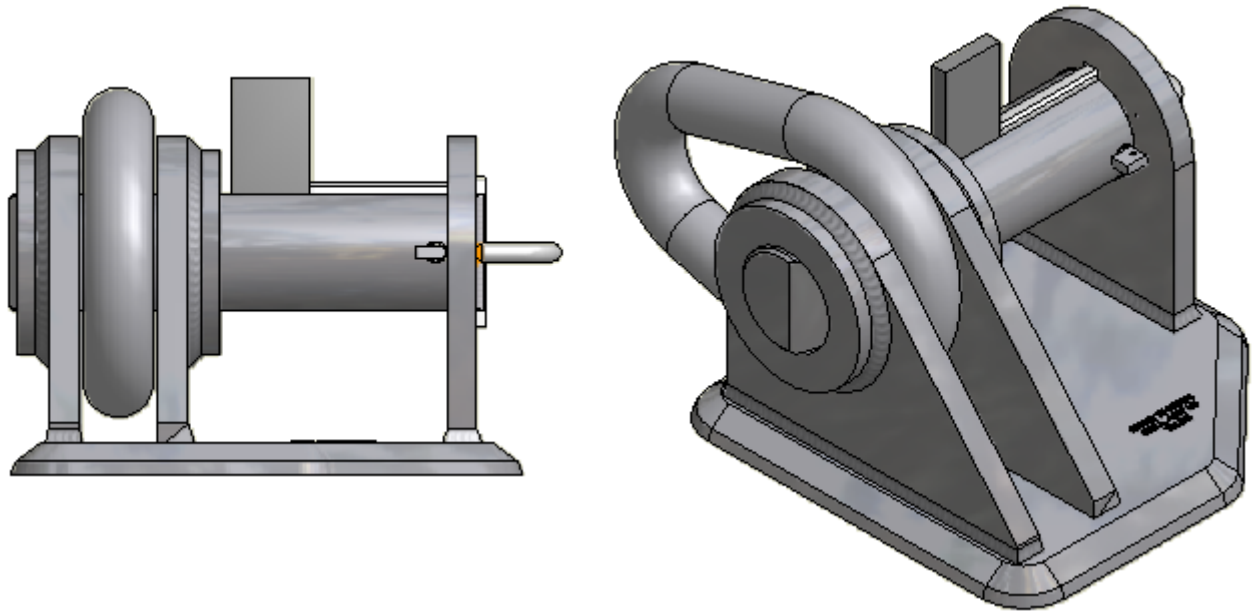


## TM 508006L Smit Bracket (type pear end link)



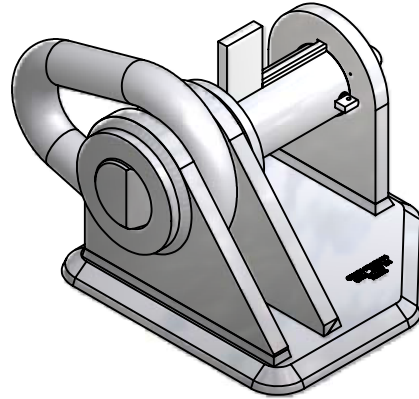
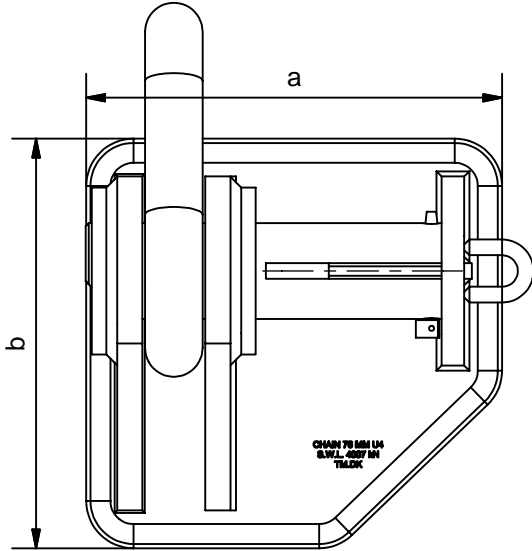
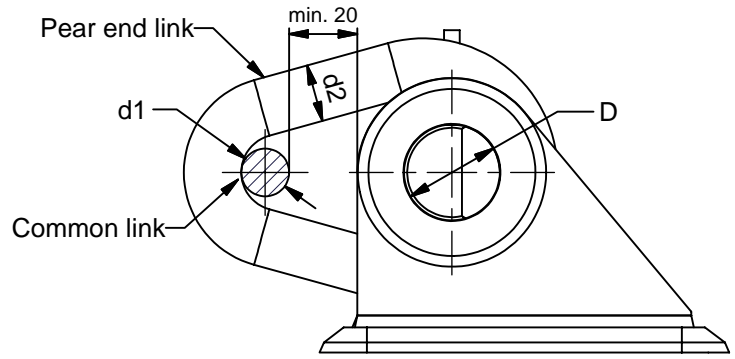
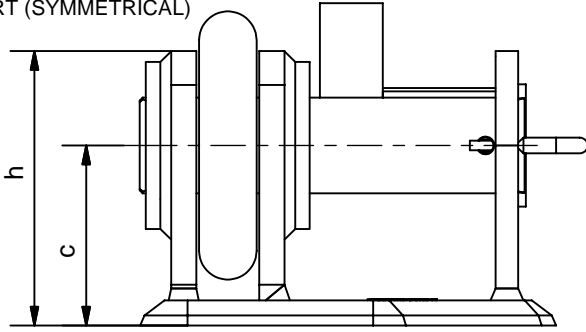
**SECTION VIEW**

See reverse for details ⇒

**TECH-MARINE EQUIPMENT APS  
ESRUMVEJ 421 • 3080 TIKØB • DENMARK**

E-mail: Tech-Marine@Tech-Marine.dk • www.tech-marine.dk  
Phone +45 4970 4395 • Fax +45 4970 1769 • CVR 25 99 96 49

STBD (SHOWN)  
PORT (SYMMETRICAL)



Chain Stopper "Smit bracket" type

TM Type	SWL (kN)	Measurement (mm)				Common link			Pear End link	
		a	b	c	h	dia	grade	MBL (kN)	dia	grade
54 U3	1513	600	650	220	370	54	U3	2270	64.8	U3
54 U4	2113	600	650	228	378	54	U4	3170	64.8	U4
76 U3	2867	600	650	226	376	76	U3	4300	91.2	U3
76 U4	4007	660	650	236	386	76	U4	6010	91.2	U4
81 U2	2253	600	650	224	374	81	U2	3380	97.2	U2
92 U3	4053	780	900	252	432	92	U3	6080	110.4	U3
92 U4	5673	780	900	262	442	92	U4	8510	110.4	U4

Marking:  
CHAIN XX MM UX  
S.W.L XXX kN  
TM.DK

Surface treatment: SA 2,5 +25my HEMPEL shopprimer ZS 15890 Grey

Material: S355J2 - EN 10025 or equivalent  
Certificates: 3.1. certificate according to EN 10204:2004  
Tollerances: EN 13920 / 22768

Constructed in compliance with IMO Guidance On Shipboard Towing And Mooring Equipment, MSC/Circ. 1175 of 24 May 2005.

Design Load  $\leq$  MBL  
Design load = 1.5 x SWL  
Allowable stresses 100/60 % of min yield point

Weld factor 0,44 to apply unless otherwise stated on drawings.

Supporting hull structure:  
Arrangement of the reinforced members surrounding is to consider any variation in direction (laterally and vertically) on towing forces acting through the arrangement of connection to the towing fittings.

Upon installation the supporting structure should be test loaded to the specified SWL and test certificate issued. The test certificate should be available for inspection on board ship. Suitable strengthening below deck by the yard.

Order: TM 508006L - TM Type - SWL  
Example: TM 508006L - 92 U3 - 4053kN

STANDARD

Tech-Marine Equipment ApS

Esrumvej 421 - DK 3080 Tikøb  
Phone +45 4970 4395 Fax. +45 4970 1769

Existing law protects TMs rights of possession to this drawing. The design or the drawing must not, without permission of TM be published, copied, reproduced, manufactured or exploited in any other way.

TM 508006L

Smit Bracket (type pear end link)

Date	Checked	Revision
13-02-2009		
Sheet	2 of 2	