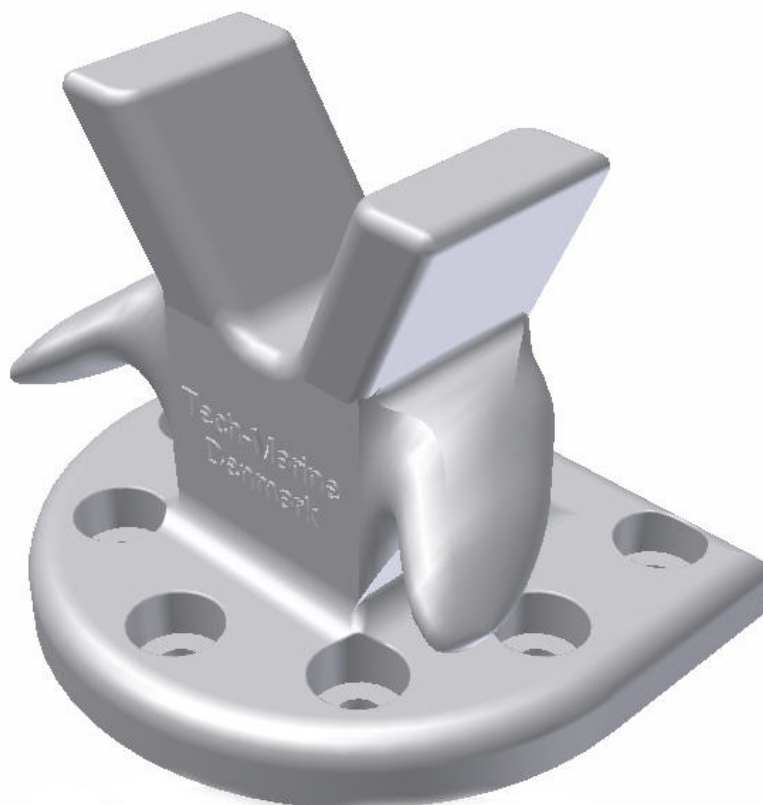


## TM 517001L Twin Horn Bollard



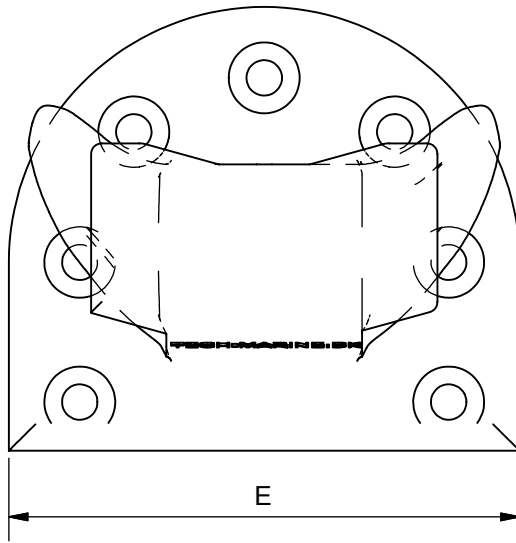
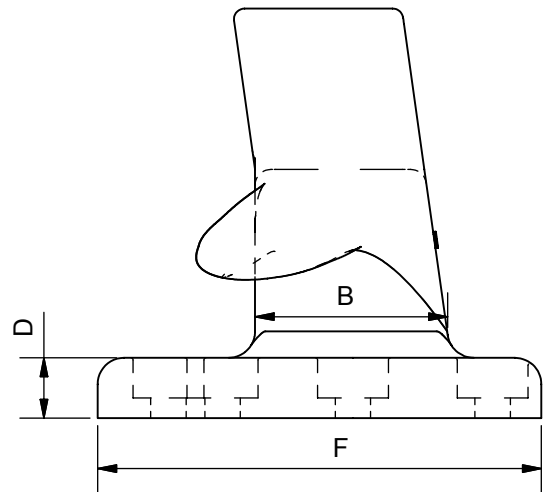
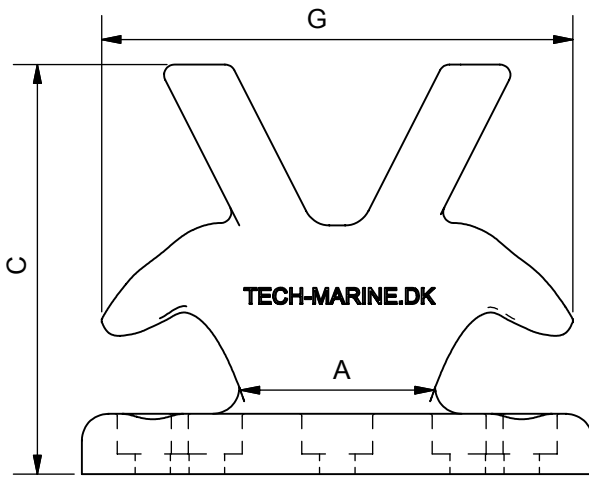
See reverse for details ⇒

**TECH-MARINE EQUIPMENT APS**

**ESRUMVEJ 421 • 3080 TIKØB • DENMARK**

E-mail: [Tech-Marine@Tech-Marine.dk](mailto:Tech-Marine@Tech-Marine.dk) • [www.tech-marine.dk](http://www.tech-marine.dk)

Phone +45 4970 4395 • Fax: + 45 4970 1769 • CVR 25 99 96 49



Type	MBL (kN)	SWL (kN)	A	B	C	D	E	F	G	BOLTS	
										No	Dia
10	92	92	178	127	362	57	349	305	382	5	24
15	147	147	178	152	401	64	400	349	420	5	30
20	196	196	203	203	476	70	483	406	407	5	36
30	294	294	254	254	533	76	610	572	508	5	36
50	490	490	317	298	597	83	762	660	559	6	42
60	736	736	317	298	604	90	762	660	559	7	45
75	981	981	355	355	743	95	851	724	761	7	56
100	1226	1226	356	356	774	114	965	838	762	7	64
150	1472	1472	432	432	851	114	1016	914	838	7	64

**Material:** Cast Iron - BS 1561 Grade 250

Constructed in compliance with IMO Guidance, MSC/Circ. 1175 of 24 May 2005 and IACS UR A2 (Rev.3)

Design load 1.5 x SWL  
Allowable stresses 100/60 % of min yield point.

**Surface protection:** One layer of zink primer

**Order:** TM517001L-Type  
Example: TM517001L-100

**Certification:** 3.1 acc. to EN 10204:2004 or equivalent

**Supporting Bolts:**  
Strength of fastening bolts and casting in to be sufficient to with stand any variation in direction (laterally and vertically) of the mooring rope load.

### STANDARD

<b>Tech-Marine Equipment ApS</b> Esrumvej 421 - DK 3080 Tikøb Phone. +45 4970 4395 Fax. +45 4970 1769 <small>Existing law protects TMs rights of possession to this drawing. The design or the drawing must not, without permission of TM be published, copied, reproduced, manufactured or exploited in any other way.</small>	<b>TM517001L</b>  <b>Harbour Equipment</b>  <b>Twin Horn Bollard</b>	Date	Checked	Revision
		27-01-2011		D
		Sheet	2 of 2	