

TM 517002L Column Bollard



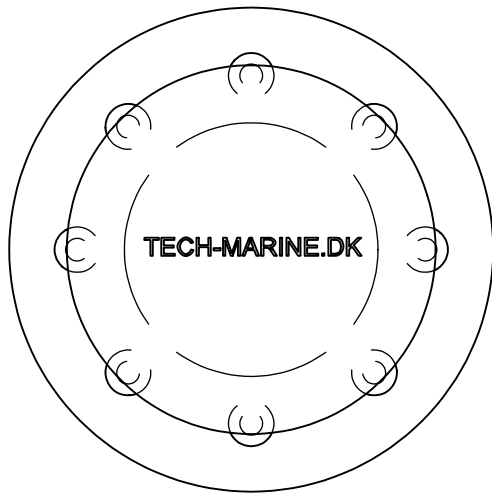
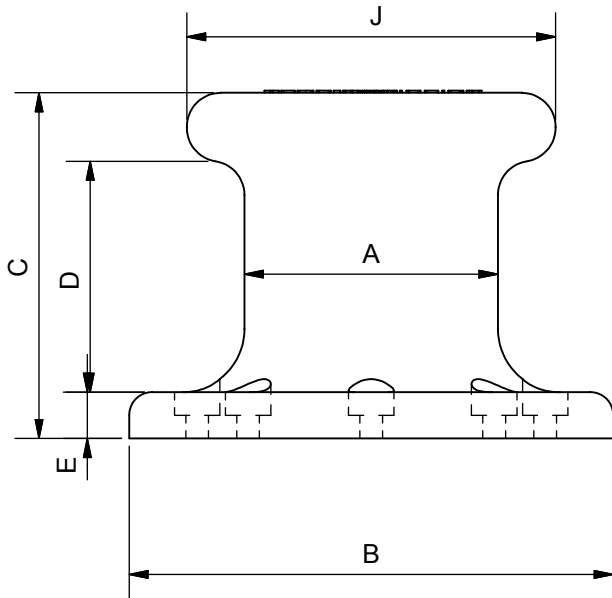
See reverse for details ⇒

TECH-MARINE EQUIPMENT APS

ESRUMVEJ 421 • 3080 TIKØB • DENMARK

E-mail: Tech-Marine@Tech-Marine.dk • www.tech-marine.dk

Phone +45 4970 4395 • Fax +45 4970 1769 • CVR 25 99 96 49



Type	MBL (kN)	SWL (kN)	A	B	C	D	E	F	BOLTS	
									No.	Dia
10	92	92	204	300	350	248	57	280	4	24
15	196	196	229	381	368	254	51	356	4	24
30	294	294	254	559	426	254	83	432	5	42
50	490	490	305	610	533	305	114	508	8	42
75	736	736	457	914	864	648	102	610	8	48
100	981	981	559	1067	762	510	102	813	8	48
150	1472	1472	559	1067	762	510	102	813	8	56

Material:
Cast Iron - GG-35 / GG-45

Constructed in compliance with IMO Guidance,
MSC/Circ. 1175 of 24 May 2005 and IACS UR A2 (Rev.3)

Design load 1.5 x SWL
Allowable stresses 100/60 % of min yield point.

Order: TM517002L-Type
Example: TM 517002L-100

Certification: 3.1 acc. to EN 10204:2004 or equivalent

Supporting Bolts:
Strength of fastening bolts and casting in to be sufficient to with stand any variation in direction (laterally and vertically) of the mooring rope load.

STANDARD

Tech-Marine Equipment ApS Esrumvej 421 - DK 3080 Tikøb Phone. +45 4970 4395 Fax. +45 4970 1769 <small>Existing law protects TMs rights of possession to this drawing. The design or the drawing must not, without permission of TM be published, copied, reproduced, manufactured or exploited in any other way.</small>	TM517002L Harbour equipment Column Bollard	Date	Checked	Revision
		27-01-2011		C
		Sheet	2 of 2	