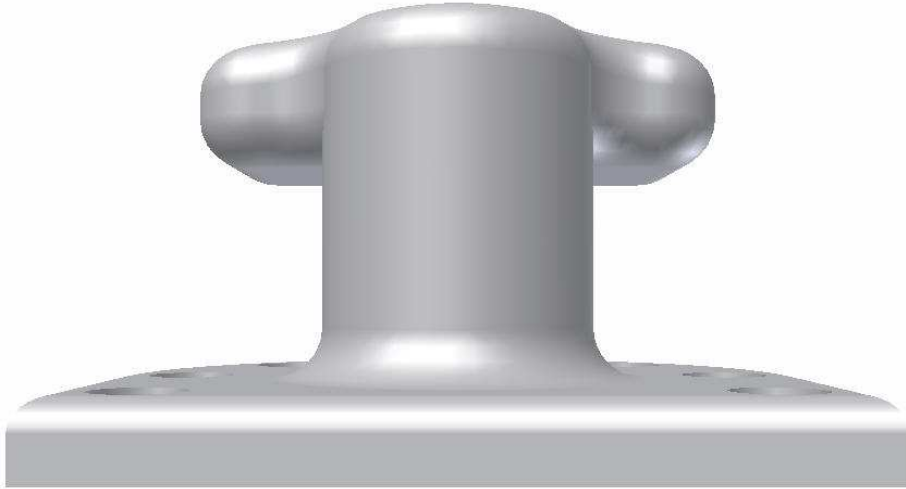


**TM 517003L Tee Head Bollard**



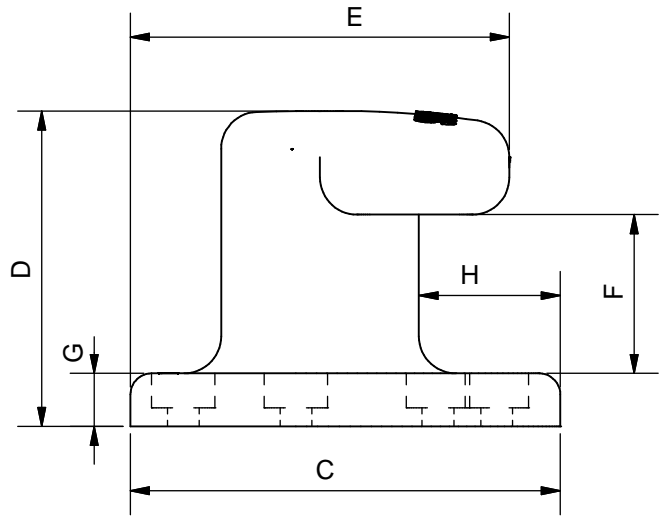
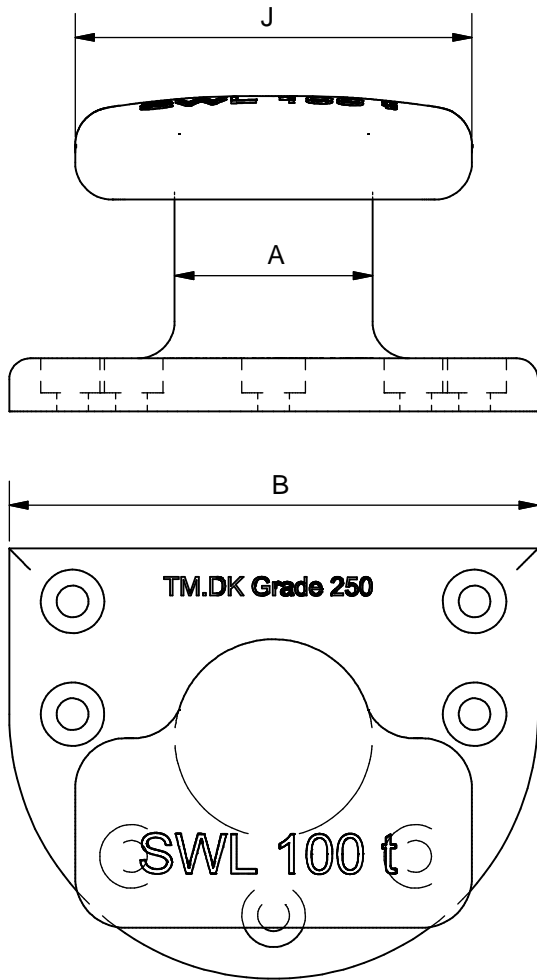
See reverse for details ⇒

**TECH-MARINE EQUIPMENT APS**

**ESRUMVEJ 421 • 3080 TIKØB • DENMARK**

E-mail: [Tech-Marine@Tech-Marine.dk](mailto:Tech-Marine@Tech-Marine.dk) • [www.tech-marine.dk](http://www.tech-marine.dk)

Phone +45 4970 4395 • Fax +45 4970 1769 • CVR 25 99 96 49



Type	MBL (t)	SWL (t)	A	B	C	D	E	F	G	H	J
10	10	10	157	350	305	241	286	127	45	91	248
15	15	15	172	400	350	275	330	134	51	105	299
20	20	20	191	483	410	290	360	145	50	125	360
30	30	30	250	600	540	380	476	190	60	155	460
50	50	50	300	800	650	480	570	245	80	206	600
75	75	75	343	800	720	510	620	260	90	222	650
100	100	100	374	1000	813	600	710	306	100	265	750
125	125	125	376	1000	813	600	710	306	100	265	750
150	150	150	430	1080	900	670	830	350	110	283	800
200	200	200	460	1080	930	685	848	320	125	287	830

**Material:** Cast Iron - BS 1452 (BS EN 1561) Grade 200/250

**Certification:** 3.1 acc. to EN 10204:2004 or equivalent

Constructed in compliance with IMO Guidance, MSC/Circ. 1175 of 24 May 2005 and IACS UR A2 (Rev.3)

**Supporting Bolts:**  
Strength of fastening bolts and casting in to be sufficient to withstand any variation in direction (laterally and vertically) of the mooring rope load.

Design load 1.5 x SWL  
Allowable stresses 100/60 % of min yield point.

**Surface protection:**  
Shotblast & paint with 2 coats of black bitumastic paint

**Order:** TM517003L-type  
Example: TM 517003L-100

### STANDARD

<b>Tech-Marine Equipment ApS</b> Esrumvej 421 - DK 3080 Tikøb Phone. +45 4970 4395 Fax. +45 4970 1769 <small>Existing law protects TMs rights of possession to this drawing. The design or the drawing must not, without permission of TM be published, copied, reproduced, manufactured or exploited in any other way.</small>	<b>TM517003L</b>  <b>Harbour Equipment</b>  <b>Tee Head Bollards</b>	Date	Checked	Revision
		29-10-2015		E
		Sheet	2 of 2	